

# Underground Booster Station

## NEWPAC Underground Chamber

Ideal for sites where space is at a premium

Can be installed under car parks

Chambers available in concrete or GRP

Standard & bespoke packages available

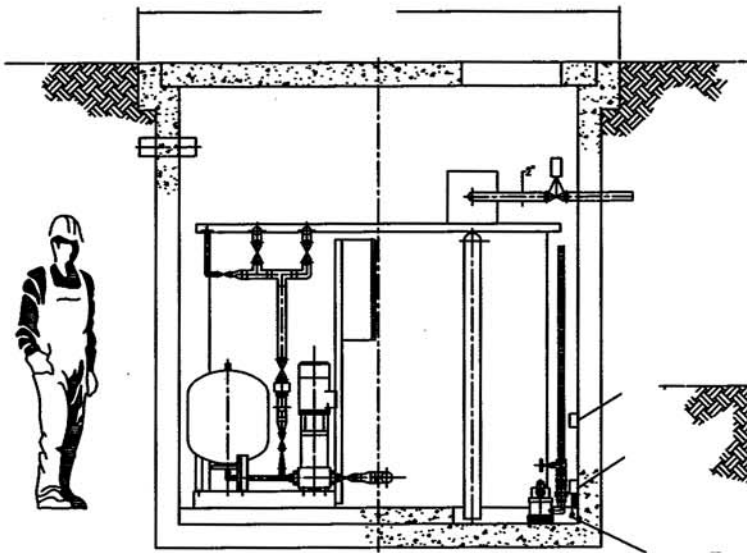
Full design service available

Various module sizes available

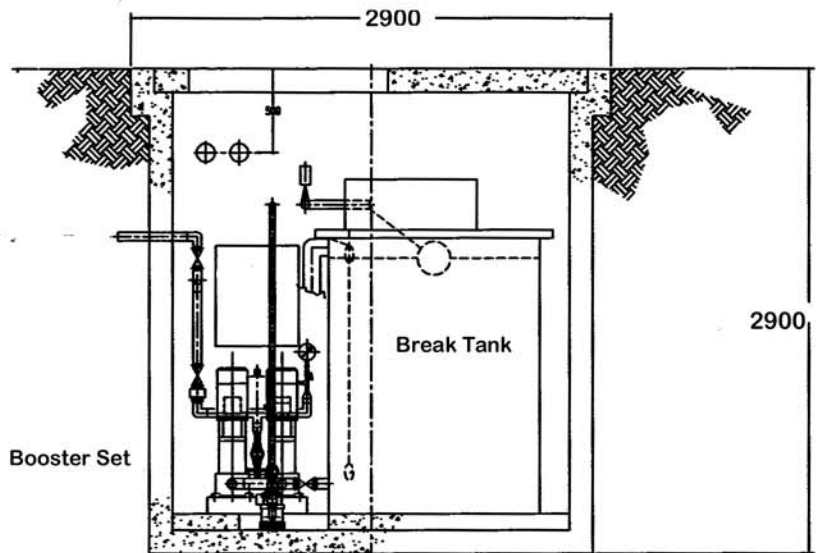
Factory assembled

Delivered to site ready for installation

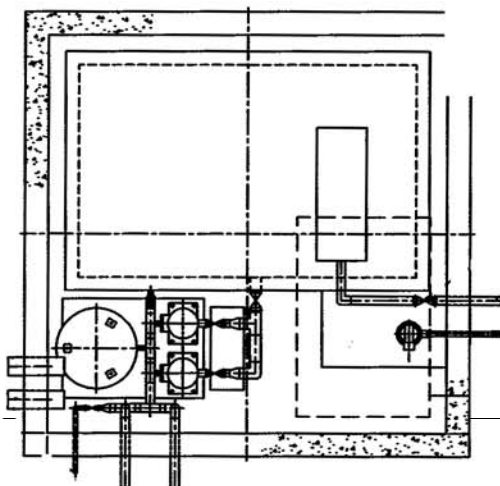
Commissioning & after sales service available



**Concrete chamber  
standard Size  
2900x2900x2900**



**Bespoke design are GRP  
chambers with sizes to  
suit**



**Duplex chamber when  
large water storage  
capacity required**